



# MICRONSWEPT™

UNIQUE CLEANROOM CLEANING CONCEPT

# MicronSweep™

A complete cleanroom cleaning system

Cleanroom cleaning is a critical process

Effective cleaning of cleanrooms and controlled environments is a critical process captured in the ISO 14644-5 standards and recommended standards like IEST-RP-CC018.3. Cleanroom cleaning must meet the highest standards. Equipment must provide thorough removal of all particulate and microbiological contaminants.

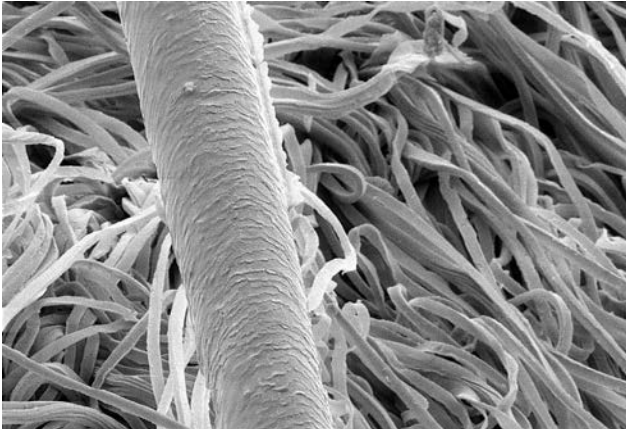
Therefore Berendsen Cleanroom Services offer MicronSweep™ - a complete cleaning concept. The system is tailored for use in cleanrooms and controlled environments and is in accordance with ISO 14644 and GMP A+B directions. Our unique cleaning system is certified and offers reusable solutions of the highest quality. Mops of fine polyester capture and retain particles, thus minimising contamination.

The complete system includes mops, trolleys, trays, sieves, sweepers and more - all of which can be sterilised for maximum contamination control.

**Cleanroom is no place for compromise!**

# Our guarantee for optimal hygiene level

- Strict contamination control



Microfibres finer than a human hair can reach into microscopic surface pores and help remove contamination thoroughly.



Mops are easy to mount using a distinctive pocket system, ensuring the operator has minimum contact with the disinfected or soiled mop.



Each mop is pre-impregnated in the hatch to prevent water and chemicals from entering the clean room.



Specialised cleanroom laundering process for ISO class 4/5 (A/B) and ISO class 7/8, packaging options and sterilisation ensures maximum contamination control.

# Quality and consistency

Berendsen Cleanroom Services ensure consistent pick-up, decontamination (and, if needed, sterilisation), packaging and delivery of cleanroom mops letting you focus on your core competencies.

The validation report shows that the mop's "mechanical" cleaning effect gives an excellent result. The cleaning personnel are given proper training on how to handle MicronSwep™ correctly.

A single 35cm mop can cover 15m<sup>2</sup> and a 50cm mop can cover 20m<sup>2</sup> surface, so you can easily calculate your cleaning needs.

## How we add value to your business:

- Consistent service process
- Certified cleaning concept
- Protection from cross-contamination
- Environmentally sound solution
- Advice and training as part of the concept





# Ergonomics and safety

MicronSweep™ lightweight materials help cleaning personnel avoid unnecessary twists and turns. With MicronSweep™, your cleaning can be finished in one step. The system accumulates particles, cleans and dries – all at the same time.

By emphasising correct ergonomic cleaning, you are actively preventing injuries for your cleaning staff. This can mean a reduction in sick days and ensuring cleaning quality, with pleasure.

All parts of MicronSweep™ are made to improve ergonomics in the cleaning of your cleanroom:

- Easy-to-handle trolleys
- Colour-coded telescope handles
- 35cm mop head for walls and ceiling
- 6m extension shaft for easy cleaning of ceilings
- Sweeper and tray for gathering of larger waste items
- 50cm mop head for floor area
- 50cm rubber scraper for liquid materials

## How we add value to your business:

- Single-step cleaning saves time and strain on staff
- Higher quality cleaning
- Wide selection of additional features



# How does it work?

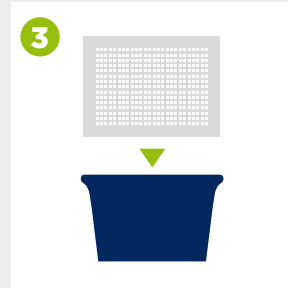
No buckets needed as mops are pre-impregnated on-site, thus reducing the risk of cross-contamination.



Collect your equipment: mops, boxes, sieve and solution.



Fold the mop with the outside inwards



Place the mops in the box and cover with the sieve



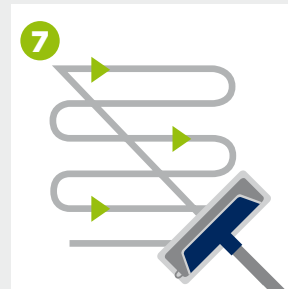
Pour the solution evenly on the sieve



Insert the mop into the frame



Wipe in the direction of the arrow



Start with one straight line and come back with a S-motion

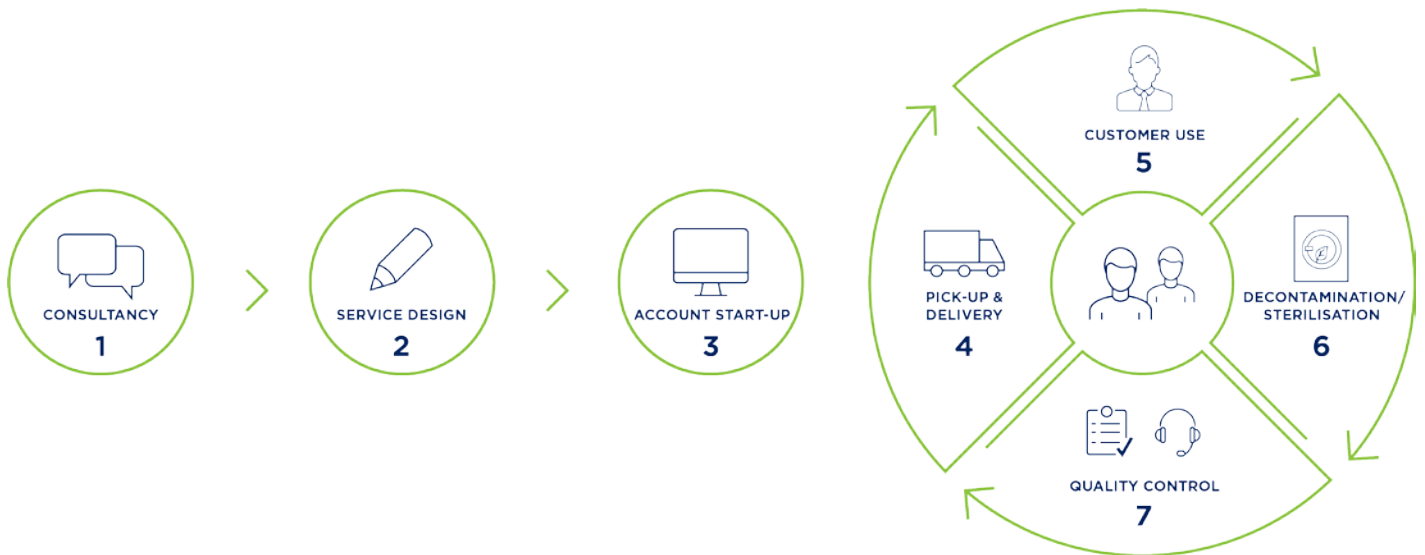


After having cleaned 20m<sup>2</sup> of surface, swap the soiled mop with a new one (based on 50cm mop)

# Berendsen Cleanroom Service

## Focus on your core competencies

- We take care of everything from purchasing, warehousing, administration, pick up and launder and delivery of your textiles, so you can focus on your core competencies.
- Every mop is equipped with a code, these are scanned in our cleanroom laundry. This ensures timely delivery and systematic replacement of mops. Traceability also provides insight into mops in circulation and helps control your assortment.



# **BERENDSEN**

## **Berendsen Cleanroom Services**

C1 Faraday Road  
Newbury  
RG14 2AD  
Tel. No 01635 234050

[berendsencleanroom@berendsen.uk](mailto:berendsencleanroom@berendsen.uk)  
[www.berendsen.co.uk](http://www.berendsen.co.uk)

The Berendsen Group has more than 16,000 employees operating in 17 countries providing textile services within a broad variety of areas ranging from cleanroom services to mats and washroom solutions. Berendsen plc is Europe's largest textile service company listed at the London Stock exchange.

With a knowledge base built up over more than 100 years, Berendsen continuously improves its business models

to meet customer demands. Partnering with Berendsen ensures you an experienced partner and tailored textiles service to meet your specific requirements.

**Contact us:** Call us on 01635 234050 or visit us on [www.berendsen.co.uk](http://www.berendsen.co.uk) to see more about what we can do for you.

We provide a 360° solution for our customers:



### **Cleanroom garments**

We offer a wide range of cleanroom garments and accessories for all production types. Moreover, we offer a selection of cleanroom undergarments for extra protection under the coverall.



### **Consumables**

We stock a vast array of consumable products for your cleanroom environment. We provide of both sterile and non-sterile products ready to support your operations.



### **Cleanroom mat service**

Our Cleanroom Flexi Mat service ensures prevention of up to 99.9% of foot and airborne contaminants from entering or exiting your critical control points.



### **Goggles for cleanroom**

Rental of goggles including cleaning, packing and sterilisation, leaving no risk of contamination and ensuring an optimal hygiene level.